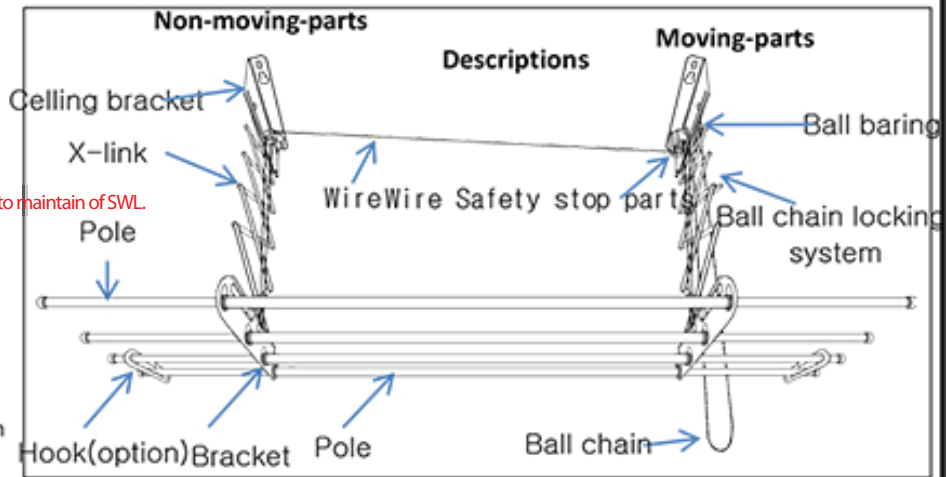


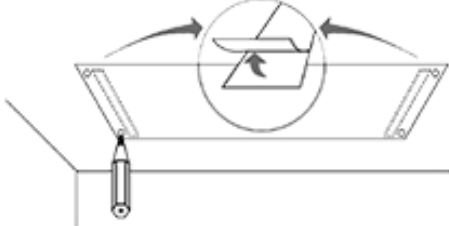
Component list

- | | |
|------------------|---|
| Moving parts | Installation materials |
| Non-moving parts | Marking paper |
| Pole 4 ea | Wedge Anchor 4 set |
| Optional Parts | * MUST use more than 5/16" Anchor to maintain of SWL. |
- DO NOT use screw**



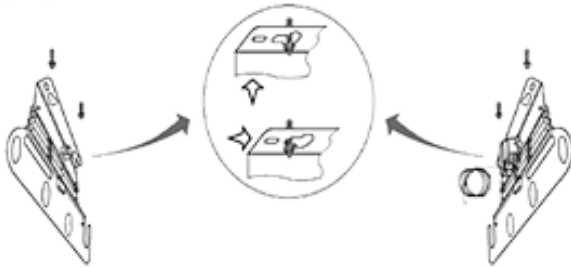
1. Secure the place of installation

It must be at least 100mm empty space from the product
 Make sure no obstacles such as door, windows, rack or etc.
 Anchor spacing Length 860mm x width 160mm



3. Place the product into bolts and tight with nuts

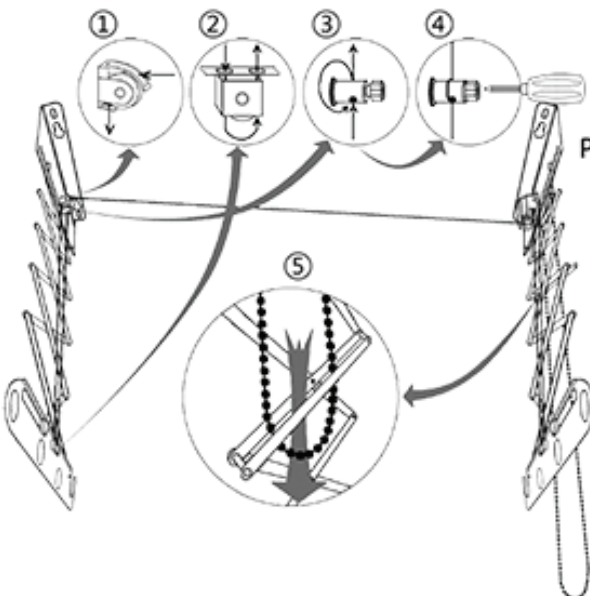
Adjust moving-parts and non-moving-parts
 right position and detained with nuts



Put it into the anchor and detained.

5. Wire adjustment of non-moving parts

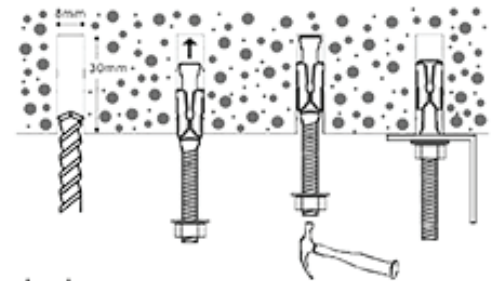
- ① Place the wire from moving-parts to ceiling mounted non-moving parts
- ② Place the wire into the
- ③ The wire must place into the hole of ceiling mounted bracket with one turning
- ④ Tight with nuts



2. Make the anchor hole and detain anchor

Marked 4 anchor hole, diameter $\phi 8$, depth 30 to 35mm
 * DO NOT over depth more than 40mm

Caution : Mounted electronic cord and waterproof might broke



4. down the X-link

Remove tie from the body
 Extended pole bracket with one hand

⑤ **Must put the chain into the safety lock system**

6. Poles installation



Place 2 sub pole place into 4 main pole

※ For safety issue, detained
 bracket and pole correctly

Place 4 main pole into the bracket and detained

If there is hook or multi purpose, place it

7. Function test

After function test, check level of pole

If level is not horizontality, adjust instructions no.3 and

④ **MUST detained with Nuts, cut out rest of wire**

